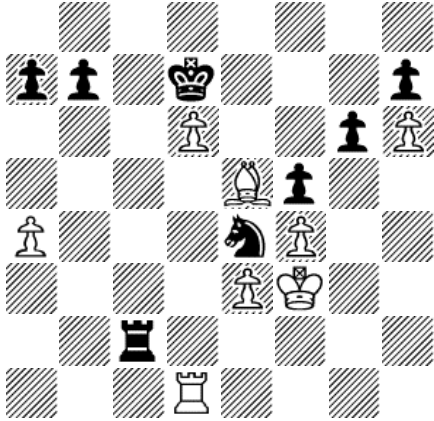
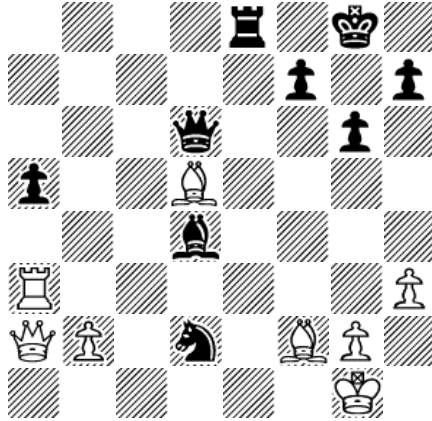


1. MS



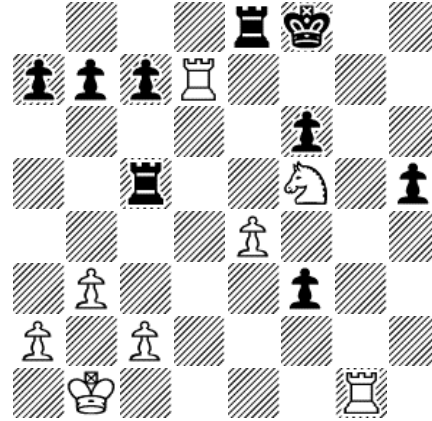
Mustan siirto, 1X

2. MS



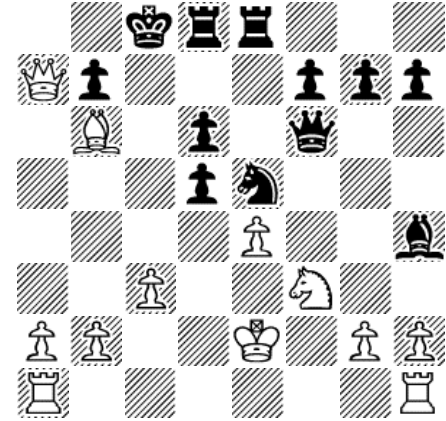
Mustan siirto, 1X

5. VS



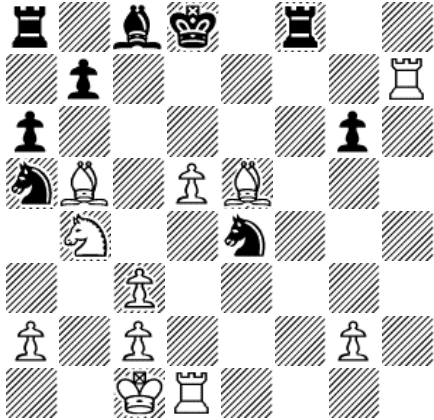
Valkean siirto, 2X

6. VS



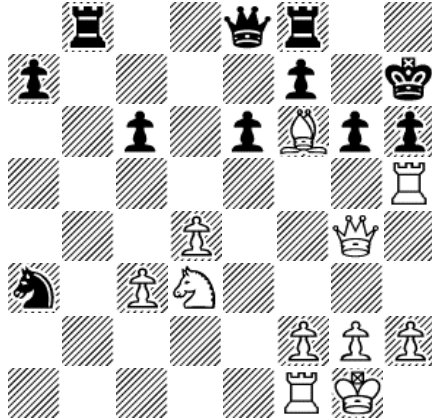
Valkean siirto, 3X

3. VS



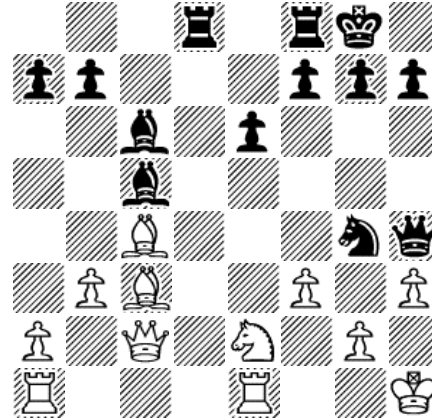
Valkean siirto, 1X

4. VS



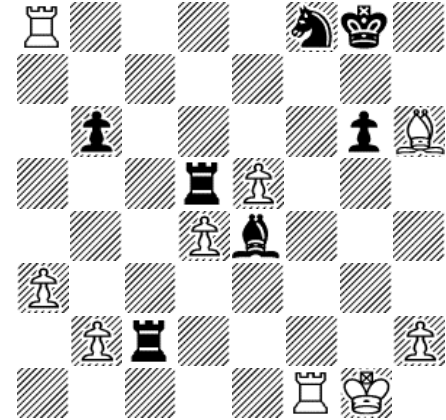
Valkean siirto, 2X

7. MS



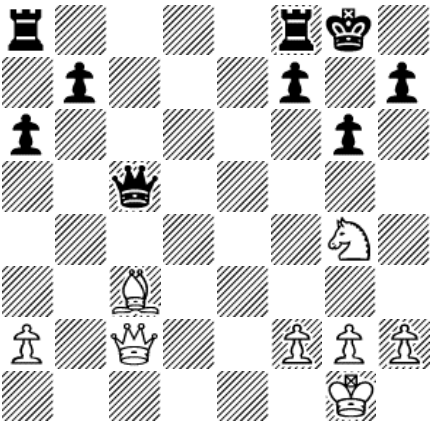
Mustan siirto, 2X

8. MS



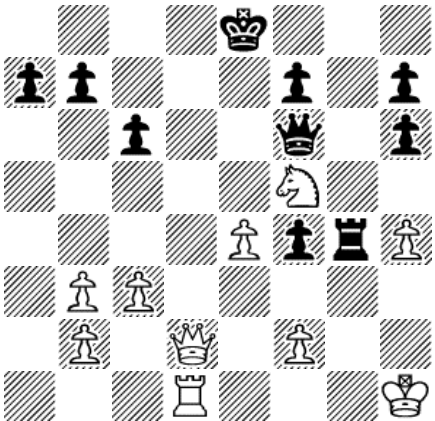
Mustan siirto, 3X

9. VS



Valkean siirto, 1X

10. VS



Valkean siirto, 3X

Ratkaisut

1. Musta tekee matin siirrolla 1... Tf2#
2. Musta tekee matin siirrolla 1... Te1#
3. Valkea tekee matin siirrolla 1.Lc7#
4. Valkea pelaa 1.Txh6 Kxh6 2.Dh4# tai 1...Kg8 2.Th8#
5. Valkea siirtää 1.Rh6 ja uhkaa mattia ruuduista g8 ja f7 (esim. 1...Tg5 2.Tf7#)
6. Valkealla on pakotettu matti - 1.Da8+ Kd7 2.Dxb7 Ke6 3.Rd4#
7. Musta tekee matin uhraamalla kuningattaren: 1...Dxh3+ 2.gxh3 Lxf3#
8. Musta matitaa paljastusshakin avulla 1...Tg2+ 2.Kh1 Tg4+ 3.Tf3 Lxf3#
9. Valkea tekee matin siirrolla 1.Rh6#
10. Valkea tekee matin siirroilla 1.Dd7+ Kf8 2.Dd8+ Dxd8 3.Txd8#